

PART OF SECTIONS 32 & 33, T.7N., R.2W., S.L.B. & M.

PLAIN CITY

KEY MAP OF PLATS A & B

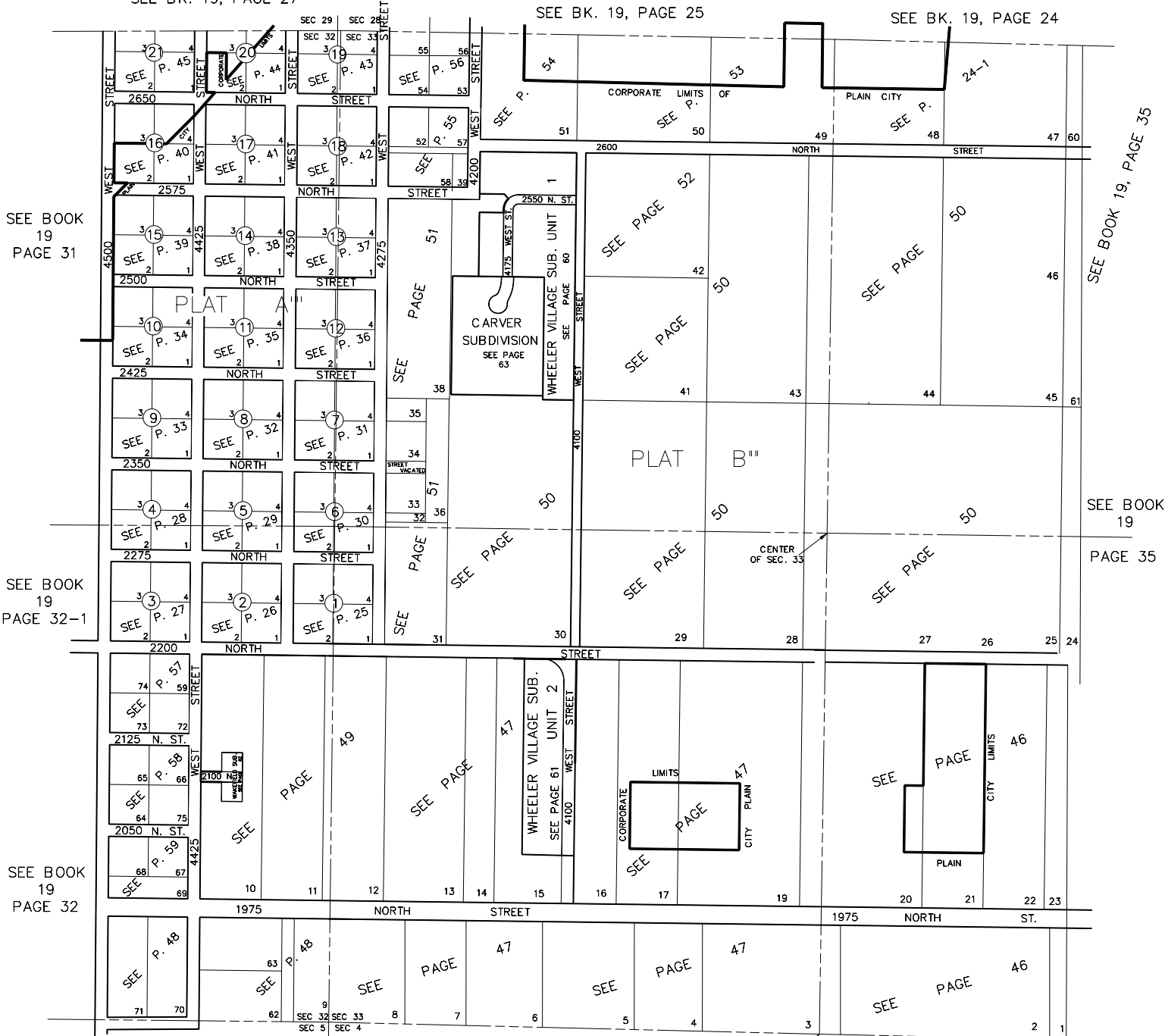
SCALE 1" = 400'

KEY MAP

SEE BK. 19, PAGE 27

SEE BK. 19, PAGE 25

SEE BK. 19, PAGE 24



SEE BOOK 19 PAGE 31

SEE BOOK 19 PAGE 32-1

SEE BOOK 19 PAGE 32

SEE BOOK 19, PAGE 35

SEE BOOK 19 PAGE 35

SEE BOOK 15 PAGE 15

SEE BOOK 15, PAGE 13

S 1/4 COR OF SEC 33